

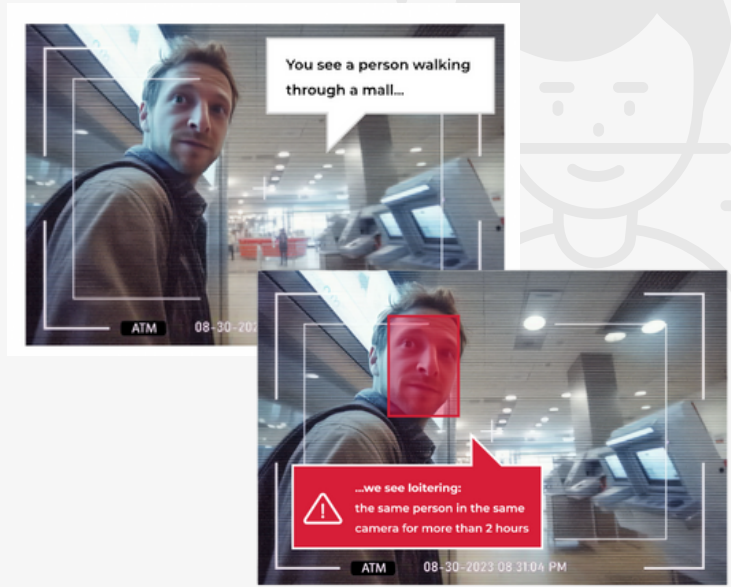


**Recognify by Krupp Technology:
Revolutionizing Visual
Intelligence**

AI-powered facial recognition redefining security and efficiency.

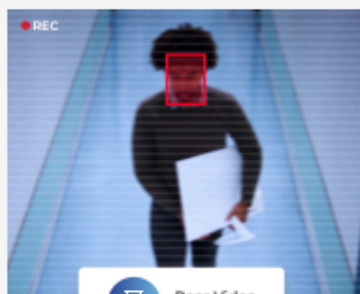
Introducing: Recognify

Krupp Technology AI's automated, contextual visual analysis platform identifies suspicious patterns and anomalies and triggers real-time alerts to enhance customer experience, improve service levels, and bolster security – all powered by Facial Intelligence technology.

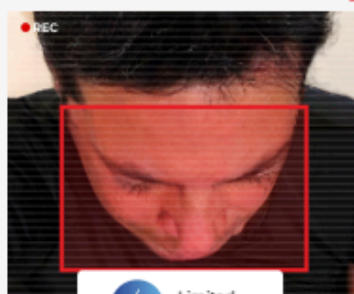


Recognify: Industry-Leading Accuracy in All Environments

At the core of **Recognify** lies an advanced facial recognition system, engineered to deliver industry-leading accuracy even under the most challenging circumstances. Whether operating in near-total darkness (1 lumen), extreme angles, moving crowds, distance, low-quality video feeds, or with faces partially obscured, **Recognify** performs with unparalleled precision.



Poor Video Quality



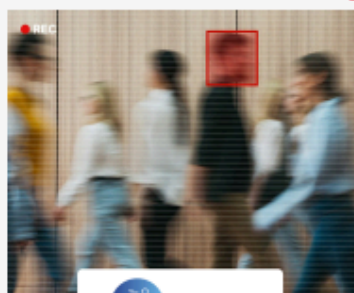
Limited Angles



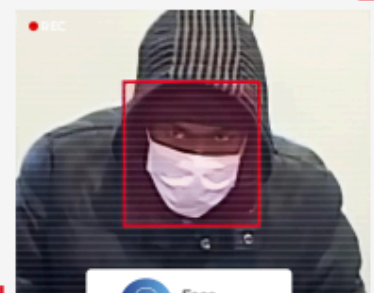
Extreme Weather



Distance



Motion



Face Coverage

Real-Time Detection and Analysis

Recognify surpasses traditional facial recognition, delivering real-time detection and analysis of critical scenarios with precision and speed, enhancing security and efficiency.

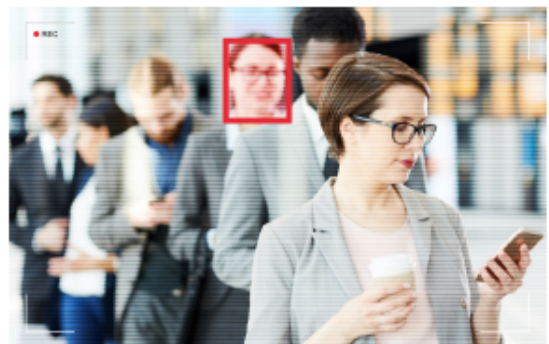
Shoplifting and Loitering

Instantly identifies suspicious behaviors.



Identifying VIP Customers

Recognizes high-value clients upon entry.



Line Monitoring

Analyzes waiting times.

A Comprehensive Security Solution

Watchlist Alerting

Proactively alerts security teams when persons of interest are detected, boosting situational awareness and enabling swift responses.



Image Matching and Investigations

Streamlines post-event investigations with advanced image matching and forensic tools.



Seamless Integration

Integrates effortlessly with video analytics services and Video Management Systems (VMS).



Mobile App

Delivers security and operational capabilities on the go, ensuring continuous efficiency.

Recognify's advanced Facial Intelligence platform captures every detail, redefining security and elevating operational standards.

Autonomous AI®: The Technology Behind Recognify

1:1 Identification of one person of interest

1:N Identification of many people of interest

N:N Authentication



Live
Real-time facial recognition at scale



Forensic
Accelerate video investigations



Search
Find any face in seconds

Most challenging conditions



Darkness



Infra-Red



Poor weather condition



Through car windshield



Non discriminative recognition for all ethnicities



Outdated images

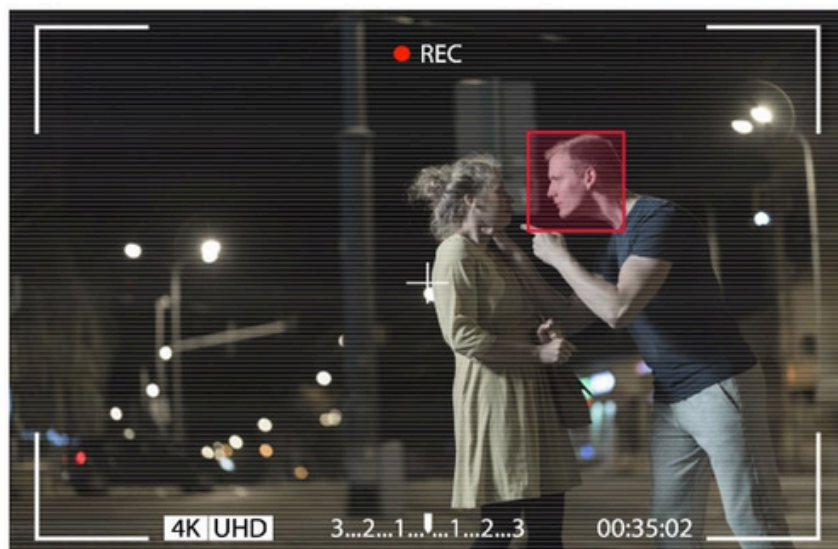


Over 50% face covered (Including masks & PPEs)



Extreme angles

Recognify is powered by Autonomous AI®, a revolutionary approach to artificial intelligence that mimics the way humans learn and recognize faces. Developed through 15 years of neuroscience research and backed by over 250 patents, Autonomous AI® represents a leap forward in machine learning and cognitive computing. This proprietary technology enables **Recognify** to process and analyze visual data with unmatched accuracy and speed, even in highly dynamic environments.



The Autonomous AI® engine behind **Recognify** isn't just limited to facial recognition—it's also the foundation of groundbreaking innovations in other fields, including autonomous vehicles, AI-based X-ray scanning, and financial technology (Fintech). By leveraging this proven technology, **Recognify** ensures that organizations benefit from a level of precision and reliability that sets a new standard in visual intelligence solutions.

Recognify: The Advantages of State-of-the-Art Technology

Recognify delivers unmatched accuracy, speed, and adaptability, setting a new standard for scalable, ethical facial recognition solutions.



Unmatched Accuracy: Recognify outperforms industry standards in NIST wild tests and Department of Homeland Security benchmarks, offering a clear edge over competitors.



Lightning Speed: Simultaneously processes hundreds of cameras, delivering real-time custom alerts. Matches 1 million faces in just 200 milliseconds.



Resilience in Extreme Conditions: Handles challenging lighting, distance, motion blur, partial face coverings (up to 50% obscured), outdated images, and sharp angles with ease.



Scalability: Designed to handle large-scale watchlists, hundreds of cameras, and millions of facial profiles, ensuring smooth growth alongside customer needs.



Flexibility: Integrates seamlessly with existing cameras, access control systems (ACS), and specialized third-party security software.



Ethical Design: Fully GDPR-compliant, empowering users with safe, ethical tools for deployment.



Multi-Platform Compatibility: Runs on Linux, Windows, and macOS (server requires Linux)



Recognify on the Edge: Leverages edge computing for lightweight, resource-efficient devices to enable real-time and offline response capabilities.



Secure POI Storage: Enrolled Persons of Interest (POIs) are stored without reference images & based solely on mathematical signature matching

How does it work?

From detection to a match in **3 steps**

1

Match individuals to a watchlist or detect unique patterns to identify persons of interest.



2

Deliver real-time insights and alerts, guiding staff with clear instructions on managing the detected situation.



3

Safeguard the privacy of others with features like face blurring and built-in privacy tools, ensuring compliance with GDPR and local privacy laws.



Competitive Advantages

Category	Reconify	Competitors
Min Face Size	Min 40 Pixels ear-to-ear	Min 50 Pixels ear-to-ear
Side Angles	90	+/- 45
Elevation Angles	45	+/- 30
% of Face Required for Recognition	50	70
Dark/Mirrored Sunglasses	Positive Recognition	Recognition Reduced
Full Recognition in Dark	Yes	No
Live/Real-Time Matching Alerts (per1000 faces)	0.01 ms	+ 0.43 ms
Outdated Reference Images	Up to 30 Years	Up to 10 Years

Why Reconify



Increase Safety: Protect individuals by limiting access, blurring, or exposing biometric information only when absolutely required



Enhance Efficiency: Simplify security workflows and improve operational outcomes.



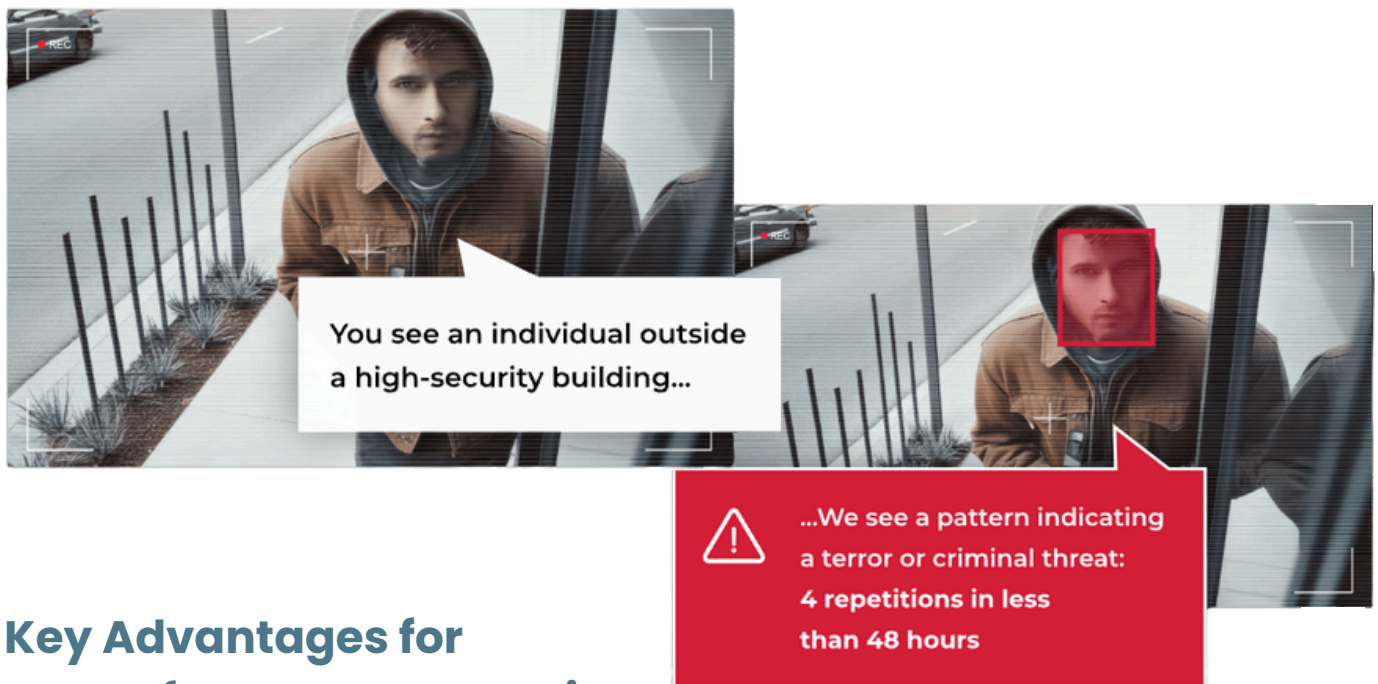
Maximize ROI: Seamlessly integrate with existing infrastructure, reducing costs while improving performance.



Use case 1: Law Enforcement

Real-Time Threat Detection and Forensic Investigations with Facial Intelligence

Law enforcement agencies around the world are facing increasing challenges as budgets tighten and crime rates rise. **Recognify** offers a groundbreaking solution powered by advanced Facial Intelligence technology to address these issues, enhancing both immediate threat detection and post-event investigative capabilities.



Key Advantages for Law Enforcement Agencies

Identify Wanted Individuals and Missing Persons:

Leveraging advanced algorithms, **Recognify** enables the rapid identification of suspects and helps locate missing individuals, ensuring timely responses in critical situations.

Enhanced Post-Event Investigations:

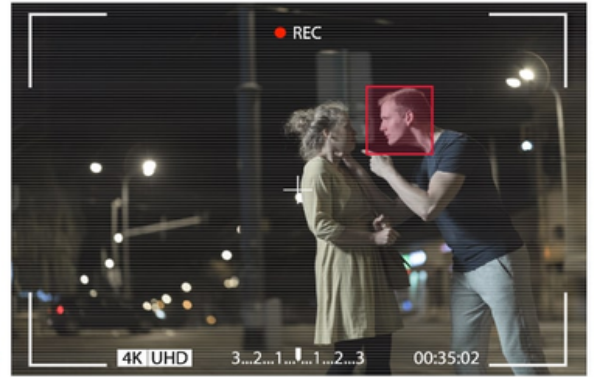
With the ability to autonomously analyze hundreds or even thousands of hours of CCTV or body-worn camera footage at speeds up to 30 times faster than traditional methods, **Recognify** delivers comprehensive results, identifying all observed faces and matches.

High-Speed Image Matching:

This technology performs searches across local and national databases, matching against up to 1 million images in just 10 milliseconds, making it an invaluable tool for identifying persons of interest.

Real-Time Deployment Across Various Scenarios:

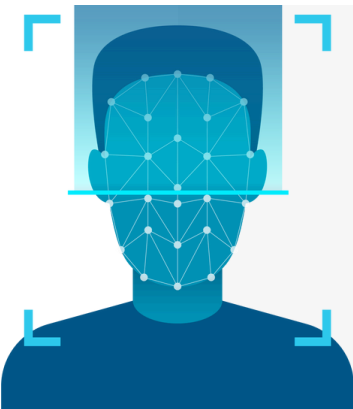
Recognify is optimized for both overt and covert operations, deployable in control rooms, patrol vehicles, or even on mobile devices like tablets and smartphones. Officers can instantly detect and respond to persons of interest, enhancing situational awareness and operational efficiency.



Performance Optimized for Real-World Conditions:

Recognify excels in challenging environments, maintaining accuracy and reliability even in poor video quality, limited camera angles, low light, harsh weather, distance, motion, partial facial coverage, or disguises.

Enhancing Forensic Investigations



Recognify elevates forensic investigations by analyzing video and photographic evidence from crime scenes. Even partial or low-quality images can be utilized to identify individuals, significantly broadening the range of usable evidence and increasing the chances of solving complex cases.

Why Recognify AI Stands Out

Recognify is built on state-of-the-art Facial Intelligence technology, delivering unmatched accuracy and speed in recognizing faces and detecting patterns. Whether in public spaces or sensitive areas, **Recognify** navigates challenging conditions such as poor lighting, distance, and facial disguises with ease, providing actionable insights for law enforcement.

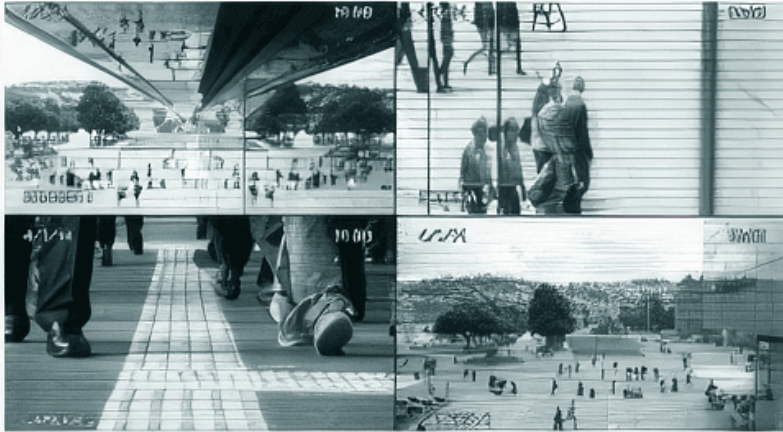
Empowering Law Enforcement Agencies Worldwide

Recognify empowers law enforcement agencies globally to redefine public safety and homeland security. With its advanced technology, **Recognify** ensures faster resolutions, greater efficiency, and enhanced accuracy in real-world operations, transforming the future of community safety into a reality.



Use case 2: Airport

Revolutionizing Airport Security with Advanced Facial Recognition



Recognify provides cutting-edge Facial Recognition technology tailored to address the unique security and operational challenges faced by airports. By leveraging advanced AI, **Recognify** enhances safety, improves passenger experiences, and streamlines processes in one of the most complex environments.



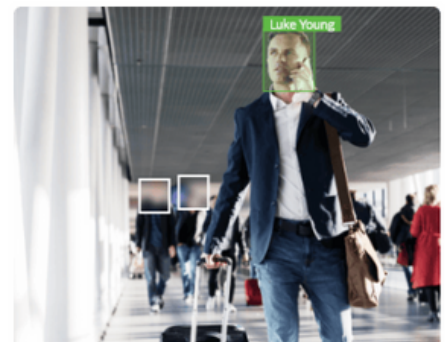
Key Benefits of Recognify in Airports



Prevent Unauthorized Access to Restricted Areas: With real-time facial recognition, **Recognify** ensures that only authorized personnel can access restricted zones, such as baggage handling areas, security checkpoints, and sterile zones, reducing the risk of breaches.

Significant Reduction in Criminal Activity

By identifying individuals on multiple suspect lists—such as terrorists, smugglers, and no-fly list individuals—**Recognify** deters criminal activity within and around the airport premises.





Enhanced Passenger Experience

Streamlining security checks and automating departure processes improves efficiency, reduces wait times, and delivers a seamless travel experience for passengers.

Automation of Departure Gate Processes

Recognify enables touchless verification of passengers, speeding up boarding and reducing reliance on manual checks.



Minimized Exposure to COVID-19 and Other Diseases:

By automating processes and reducing physical interaction, **Recognify** enhances health and safety protocols, helping to prevent the spread of contagious diseases.

Key Functionalities for Airports

Security and Customs:

Recognify provides instant alerts when individuals on suspect lists—such as criminals, terrorists, smugglers, or VIPs—are detected, ensuring swift responses from airport security teams

Management of Restricted Areas:

The system monitors access to sensitive areas, such as baggage loading zones (HBS) and sterile zones, preventing unauthorized entry and safeguarding critical operations

Contact Tracing Investigations:

Recognify's efficient investigation tools allow airport authorities to trace contacts quickly and accurately, saving both time and manpower in scenarios such as disease outbreaks or incidents requiring detailed analysis.

Operational Flexibility:

Recognify integrates seamlessly with existing airport infrastructure, including surveillance cameras, access control systems, and operational software, ensuring smooth deployment and ongoing management.